

Beetle V1.0 User Manual

1. Scope of Application

This document is based on Beetle V1.0, with a software version of SW-1.0.

2. Update Note

2025/02/20—Created

The documentation is developed based on the hardware version SW V1.0 and the software version SW-1.0 as examples.

3. Product Introduction



No.	Name
1	Strobe Light
2	3D Lidar
3	Front Headlight (Blue)
4	Front Oblique Camera
5	Infrared docking Component
6	Charging Electrode ×2
7	Side Brush



No.	Name
8	Manual Dust Shaking Device
9	Rear Oblique Camera
10	Trash Bin Handle
11	Trash Bin
12	Trash Bin Latch x2



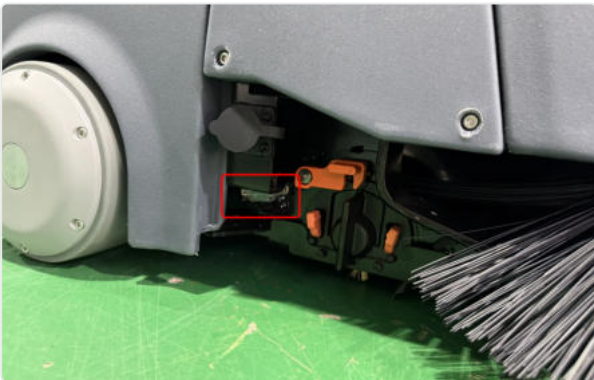
No.	Name
13	Emergency Stop Button
14	Power On/Off Button
15	Touch Screen
16	Head Cover



No.	Title
19	Left/Right Camera
20	Left/Right Side Door
21	Left/Right Drive Wheel
22	Manual Charging Port
23	Roller Brush Assembly

4. Power On/Off

The air switch is on the right side of the machine. First, open the air switch. “-” indicates connection, and “o” indicates disconnection.



- (2) Press and hold the power button for 5 seconds to turn on the machine. The indicator light strip will flash blue, and the logo will appear on the screen. Wait for a moment, then enter the password to log in.
- (3) Press and hold the power button for 5 seconds to turn off the machine. The indicator light strip and screen will turn off.



5. Manual Pushing

(1) Press the handle switch button and lift the handle to the maximum angle. The machine will automatically switch to manual pushing mode. Hold the handle and push the machine forward.



(2) When retracting the handle, press the button first, then fold the handle down and press the locking buttons on both sides to secure it.



6. Manual Charging

1. Push the machine next to the charging station. Open the side door of the charging station and take out the charging plug.



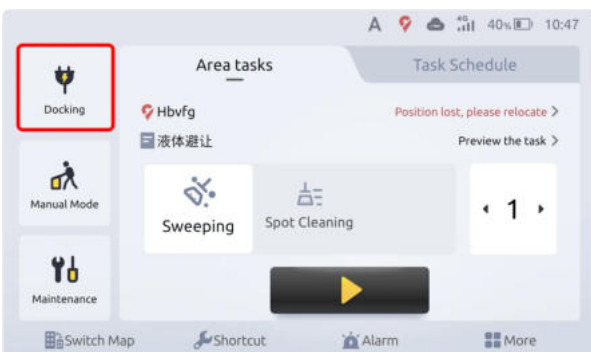
2. Insert the plug into the charging port on the machine.

3. When the machine's light strip turns green, it indicates that it is charging. When it is fully charged, the light strip will turn blue. After the charging is complete, unplug the plug and put it back into the side door of the charging station.



7. Automatic charging

1. On the screen, click “Home” and then click “Return to Charge” to let the machine automatically go back to the charging station for charging. When the machine's light strip turns green, it indicates that it is charging. When it is fully charged, the light strip will turn blue.



8. Manual Operation

Before manual operation, ensure that the roller brush, side brush, and trash bin are all properly installed.



Press the handle switch button and lift the handle to the maximum angle.



Tap the screen to select the cleaning mode and cleaning level. After switching, push the machine forward to start the cleaning operation.



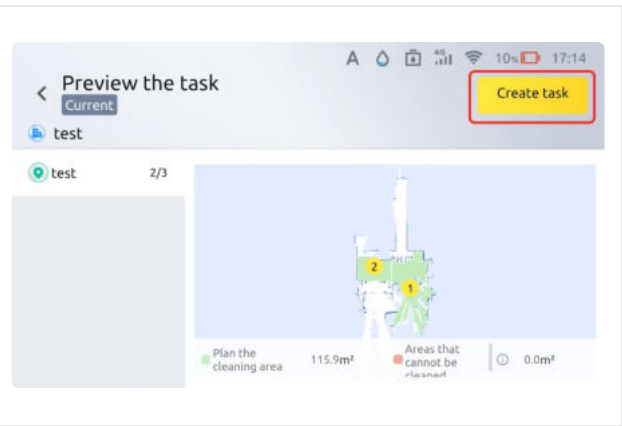
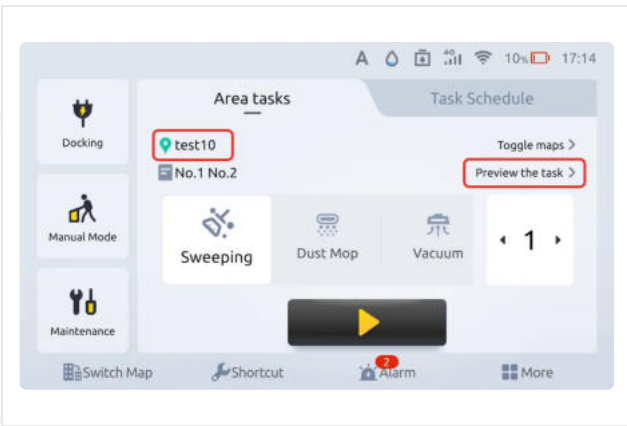
After the cleaning is complete, press the buttons on both sides to lock the handle.



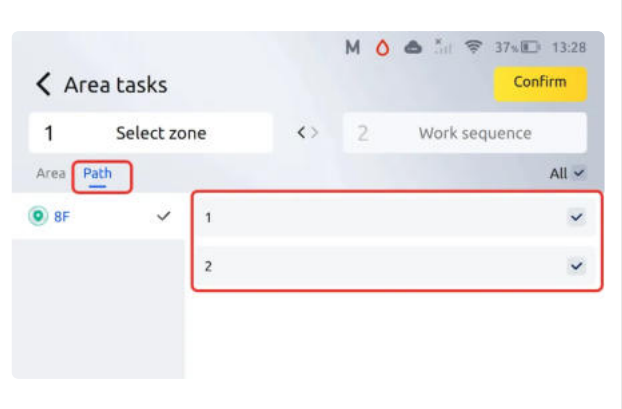
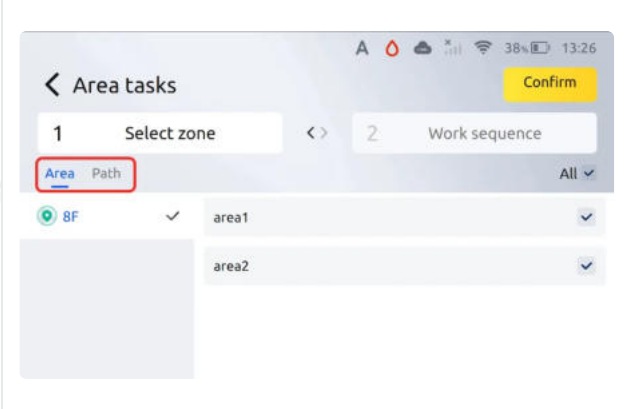
9. Automatic Operation

Before starting automatic operation, ensure that the machine's positioning is normal, and the side brush, roller brush, and trash bin are all properly installed. Tap on "Preview the Task".

Tap on "Create Task".

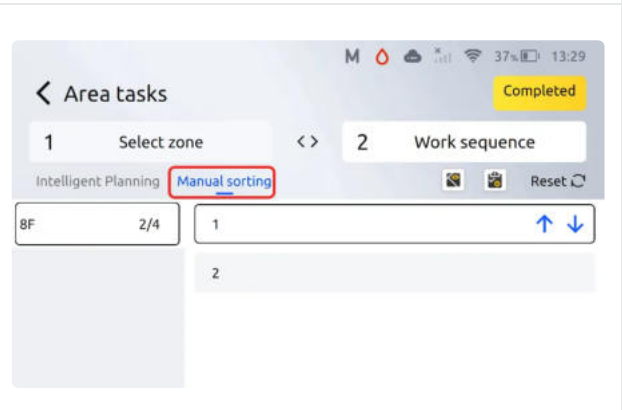
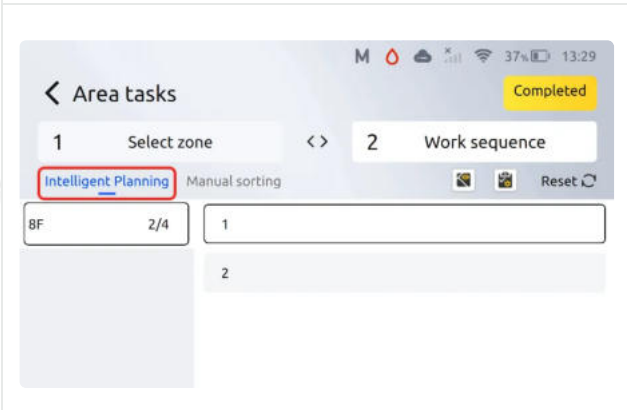


Select the areas that need to be cleaned, or tap on "Path" to choose the corresponding path task, and then tap on "confirm".

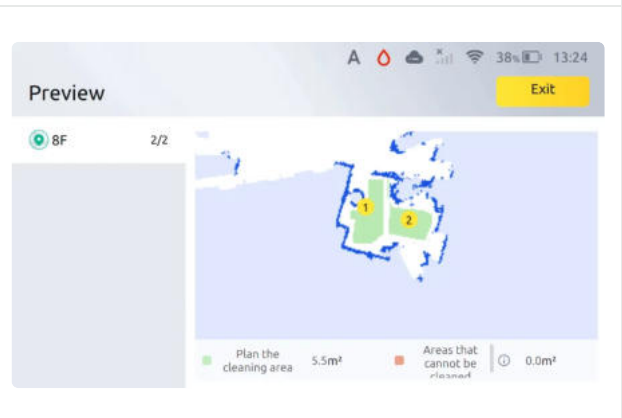
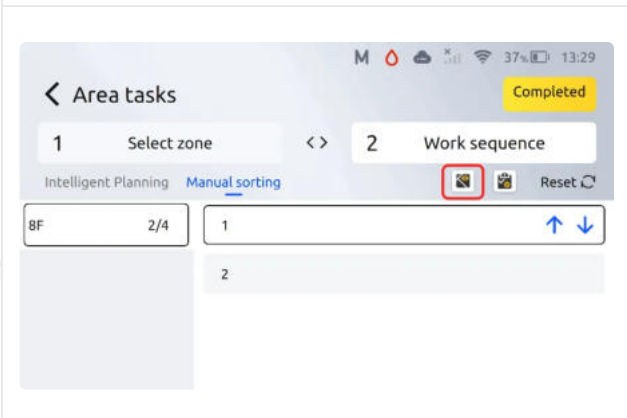


The operation sequence is divided into "Intelligent Planning" and "Manual Sorting". Intelligent Planning automatically plans the route according to the predefined area sequence.

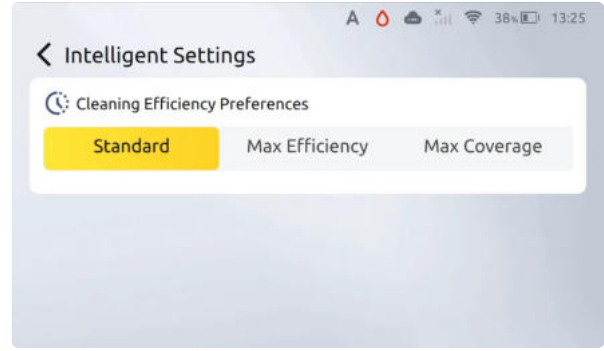
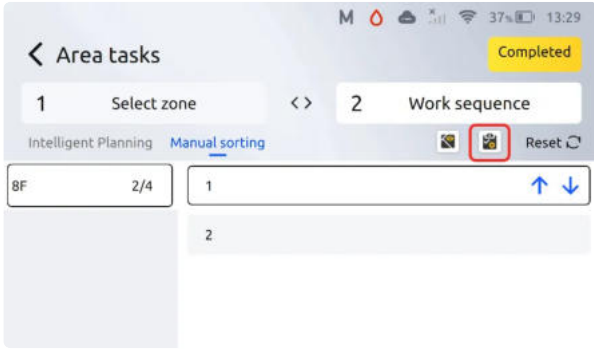
Manual sorting allows you to manually adjust the cleaning tasks according to your preferences. Tap the arrow next to the task to adjust the order of operations.



After the settings are completed, tap the preview icon to view the sequence in which the machine will clean the areas.

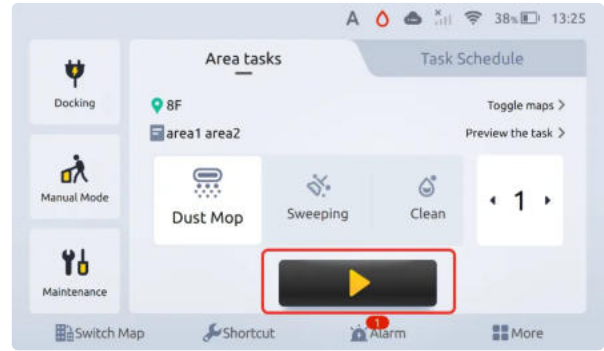
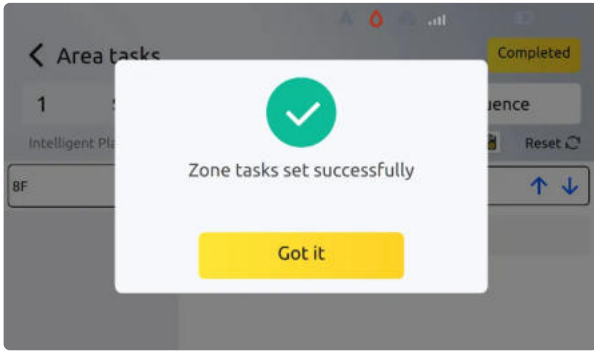


Tap the cleaning efficiency button to choose from three cleaning efficiency modes: Standard Mode, Maximum Efficiency Mode, and Maximum Coverage Mode.



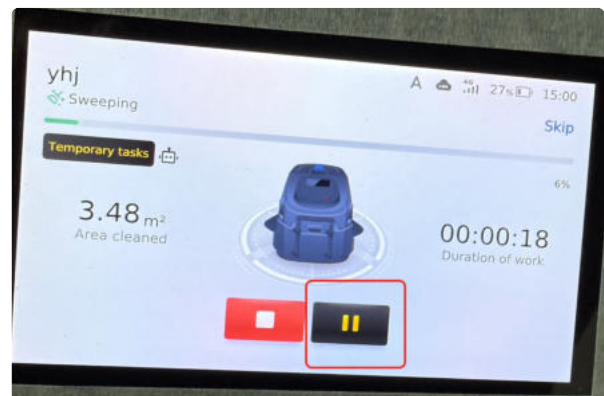
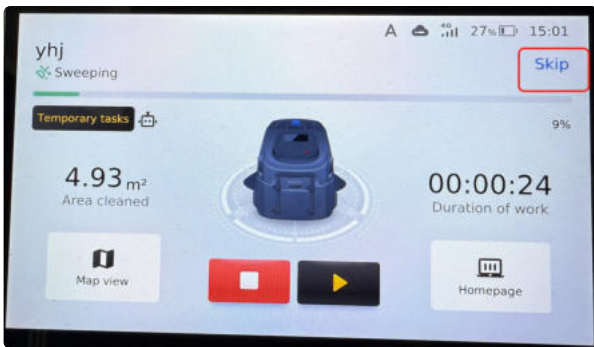
Tap "Completed" to successfully set up the automatic task.

Tap the "Start" button to have the machine automatically begin cleaning in the designated area.



If you need to skip the cleaning of this area, tap "Skip". The machine will bypass the current task and proceed to the next task to continue cleaning.

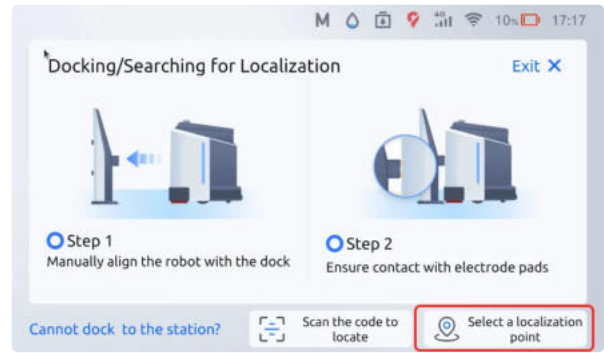
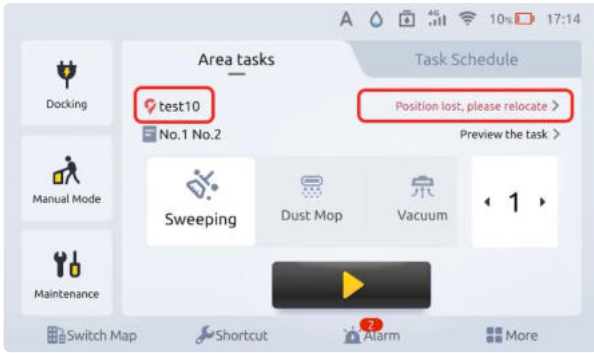
If you need to pause or stop the operation midway, press the red emergency stop button or tap the "⏏" pause button on the screen, and then tap the end button.



10. Positioning

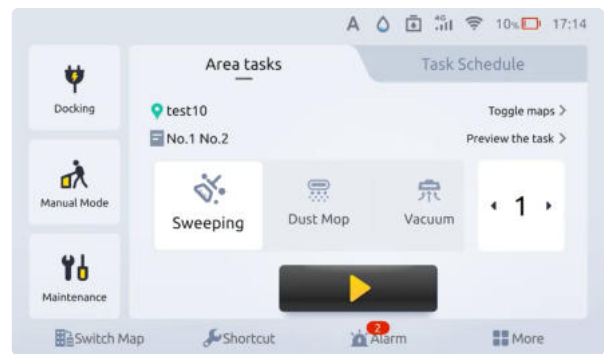
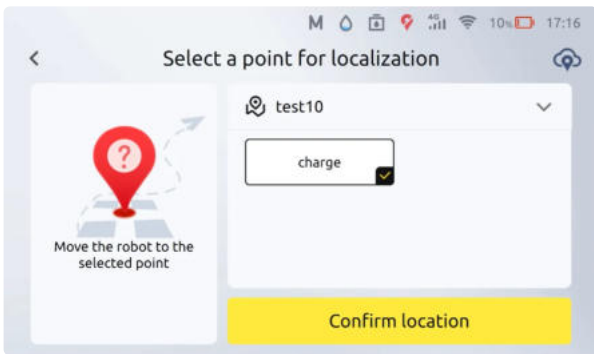
When the positioning icon on the machine's screen is displayed in red, it indicates that the machine has lost its positioning and is unable to complete the automatic operation.

Manually push the machine to the positioning point, then click on "Positioning Lost, Please Retrieve" or "Select Point for Positioning."



Select the positioning point and click on "Arrived".

The machine will rotate in place to automatically complete the positioning, and the positioning icon will turn green.

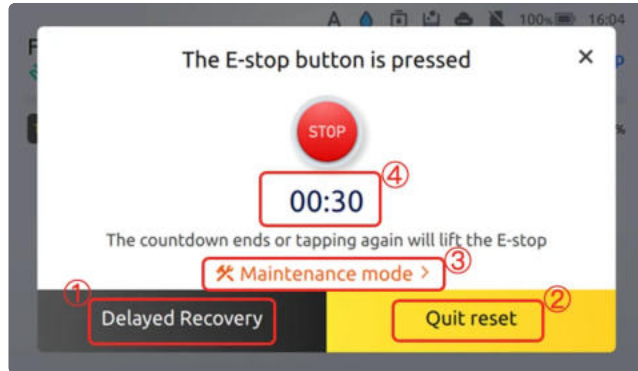


11. Emergency Stop and Risk Avoidance

During the automatic cleaning operation, if an emergency situation arises, pressing the red emergency stop button will put the machine into an emergency stop state.

When the machine is in emergency stop state:

- ① Click "Delayed Recovery" to hide the emergency stop state interface, and it will be automatically released after the countdown ends.
- ② Click "Quit Reset" will abandon the emergency stop self-recovery, and subsequent recovery can only be achieved by pressing the emergency stop button again.
- ③ Click "Maintenance Mode", the machine will enter the maintenance mode, and you can maintain and clean accessories according to the instructions.
- ④ Without any operation, the machine will automatically cancel the emergency stop state after the countdown.



...科技发展有限公司 - 陈明(25989748)

...科技发展有限公司 - 陈明(25989748)